



# PROGNOST<sup>®</sup>-NT



## Software Upgrade

It is essential to ensure that the monitoring technology of your rotating equipment is always up to date. The annual upgrade of your PROGNOST®-NT software delivers all advantages of our ongoing product developments.

In this brochure, we introduce you to all important innovations and changes for achieving your goals more rapidly.

Remark: Some of the new functions need appropriate system capacities. In case you are using older PCs, some of the new functions may have to be deactivated or can only be used to a limited extent.

## All upgrades at a glance

### General

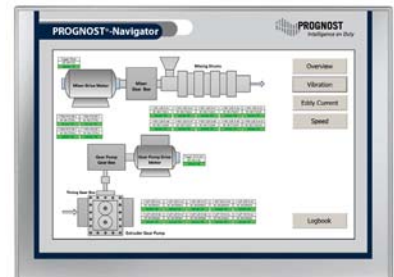
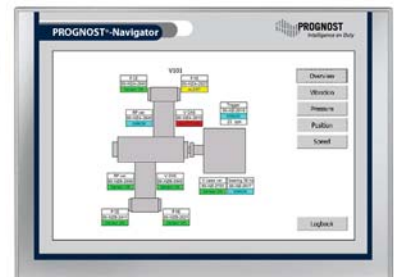
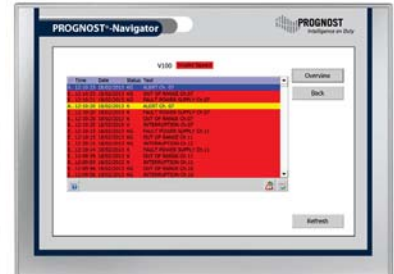
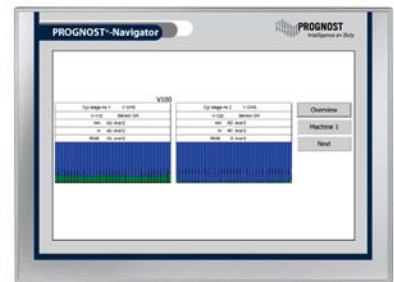
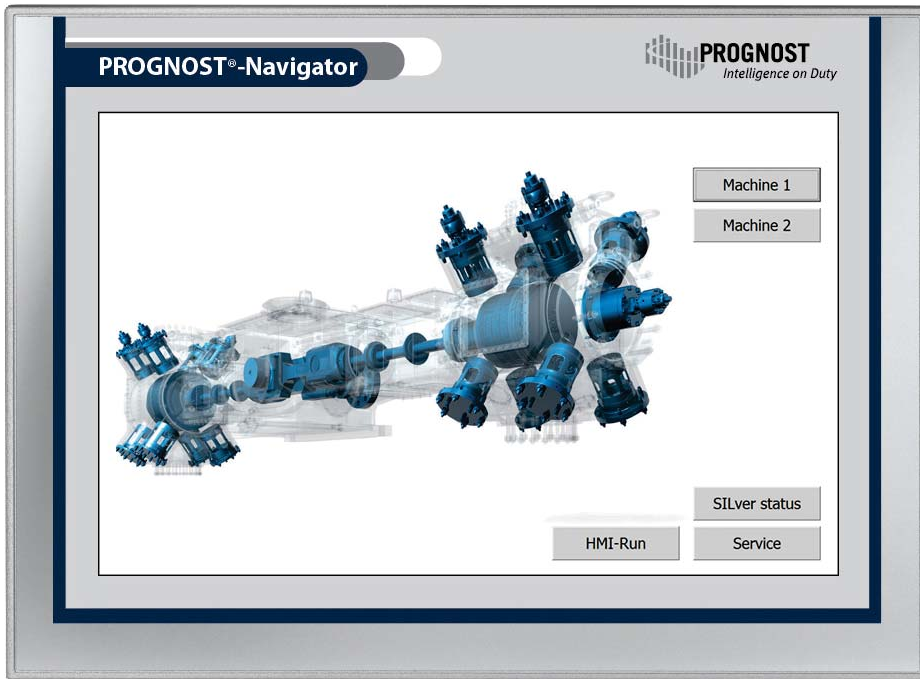
- PROGNOST®-Navigator
- Monitoring other machine types
- Safety Controller status

### User

- "Read Only" VISU
- OneClick Cockpit
- Trend
- Online signals
- Analysis functions
- Display inside VISU
- Ring Buffer

### System

- Communication Unit
- Implementation of upgrades



## General

### PROGNOST®-Navigator

#### *The field display for your PROGNOST® system.*

With this new version, a connection can be established between PROGNOST®-NT and PROGNOST®-Navigator.

PROGNOST®-Navigator is a touch panel. It can be used as a status display, e.g. mounted on the outside of a purged cabinet.

### Monitoring other machine types

#### *Expansion of monitoring capabilities for rotating equipment and visualization with VISU.*

The capabilities of PROGNOST®-NT for the monitoring of rotating equipment such as centrifugal pumps, extruders, fans, gearboxes, screw compressors gas turbines have been expanded.

Furthermore, FFT analyses have been revised and especially aligned to the characteristics of centrifugal and rotating machinery.

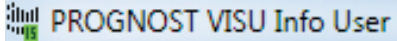
### Safety Controller status

#### *Status transfer from Safety Controller to PROGNOST®-NT.*

Transfer of the diagnostic status (ALERT, SHUTDOWN, UNSAFE) and the digital inputs (e.g. Reset of SHUTDOWN) to PROGNOST®-NT is now available. Thus, display of trends and status values inside VISU is enabled.



## User

“Read Only” VISU 

**Work with the Read Only-function to prevent any kind of system changes.**

Implementing *PROGNOST® VISU for Info Users* allows access to all online and trend views as well as logbook without the option of making any system changes. In case system changes are necessary, a “full access”, i.e. regular VISU version, is required.

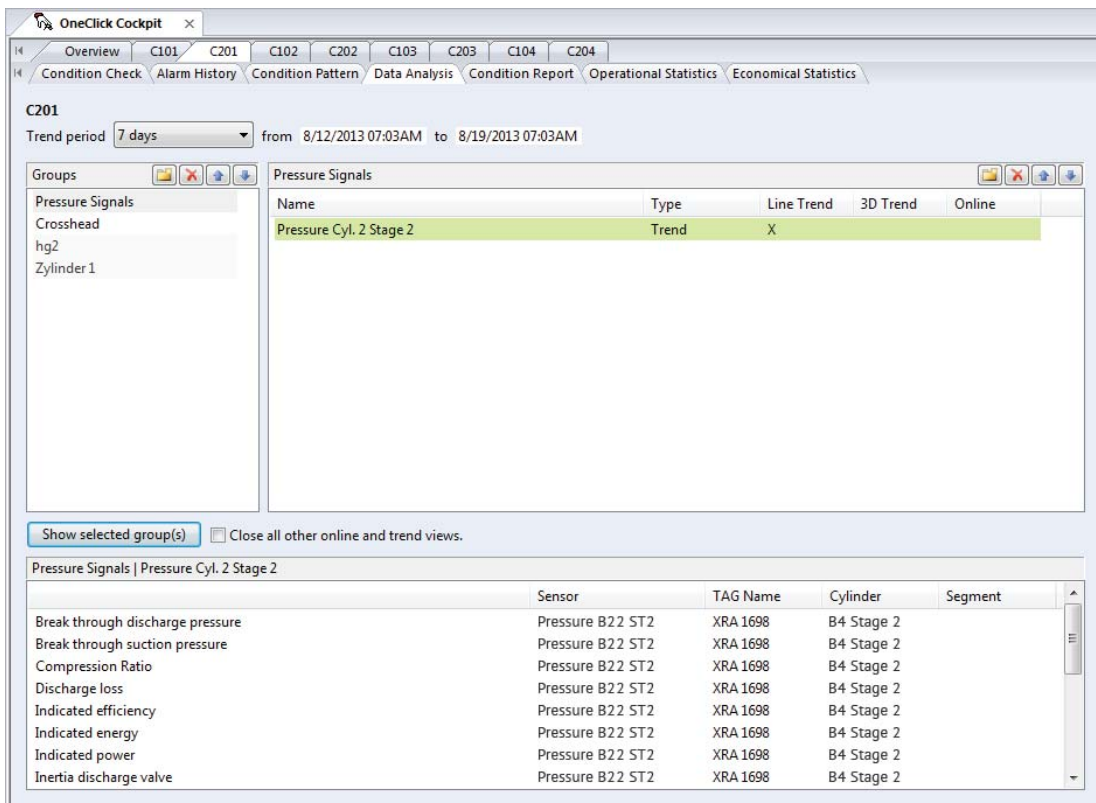
This technical solution meets all IT safety rules without restricting analysis functions.

## OneClick Cockpit

**Extension of OneClick Cockpit to support users in their recurring diagnostic tasks.**

This substantial change to version 14 aids analysts in their daily routine.

The all-new “Data Analysis” tab enables users to define recurring diagnostic tasks to work through them most efficiently. Here, it is possible to create groups containing trend- and/or online compositions. When defining an analysis group, users can decide whether the group shall start automatically when the connection is established or shall be implemented manually. If more than one user works with a system, they can allow read access of their defined groups for other users.



The screenshot displays the OneClick Cockpit interface for unit C201. The 'Data Analysis' tab is active, showing a list of pressure signals. The selected signal, 'Pressure Cyl. 2 Stage 2', is highlighted in green. Below the list, a detailed table provides sensor information for this signal.

Name	Type	Line Trend	3D Trend	Online
Pressure Cyl. 2 Stage 2	Trend	X		

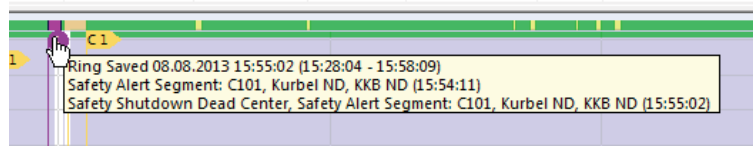
  

Sensor	TAG Name	Cylinder	Segment
Break through discharge pressure	Pressure B22 ST2	XRA 1698	B4 Stage 2
Break through suction pressure	Pressure B22 ST2	XRA 1698	B4 Stage 2
Compression Ratio	Pressure B22 ST2	XRA 1698	B4 Stage 2
Discharge loss	Pressure B22 ST2	XRA 1698	B4 Stage 2
Indicated efficiency	Pressure B22 ST2	XRA 1698	B4 Stage 2
Indicated energy	Pressure B22 ST2	XRA 1698	B4 Stage 2
Indicated power	Pressure B22 ST2	XRA 1698	B4 Stage 2
Inertia discharge valve	Pressure B22 ST2	XRA 1698	B4 Stage 2

## Trend

### **Trend flags give more information about safety relevant events.**

In case of an ALERT or SHUTDOWN, a trend flag will be generated automatically. This flag compiles all relevant data and allows direct access to the ring markers or any other important information.



## Online signals

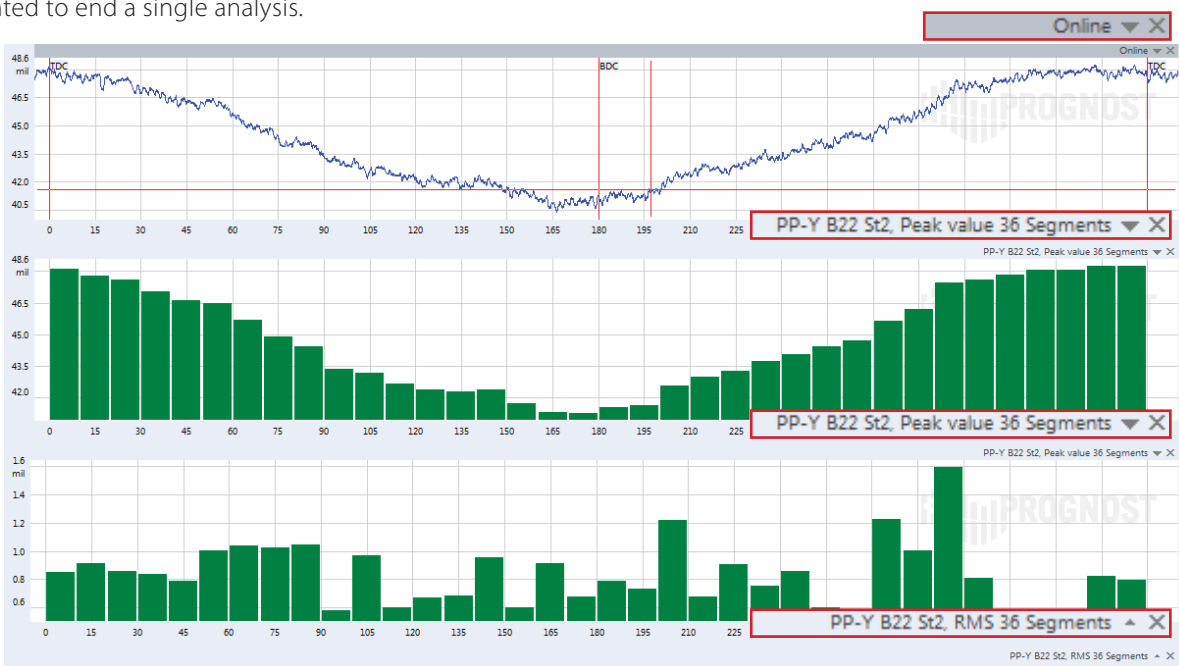
The presentation of online signals has been optimized in two ways.

### **Unlimited number of online signals in one online composition.**

Users are able to compare as much signals as needed. In the previous versions of VISU, the number of signals in one online composition was limited to 16.

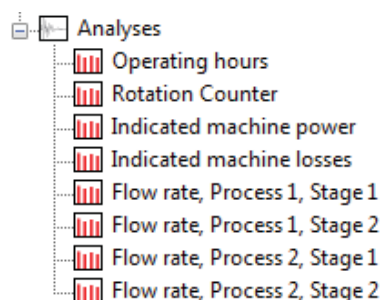
### **Partial closing and minimizing of the analysis window.**

Users can create different types of analyses for one online signal and compare, minimize or close each analysis-window individually. In older versions, users had to close the online signal if they needed more space for the analyses window or wanted to end a single analysis.



### **New analysis for flow rate.**

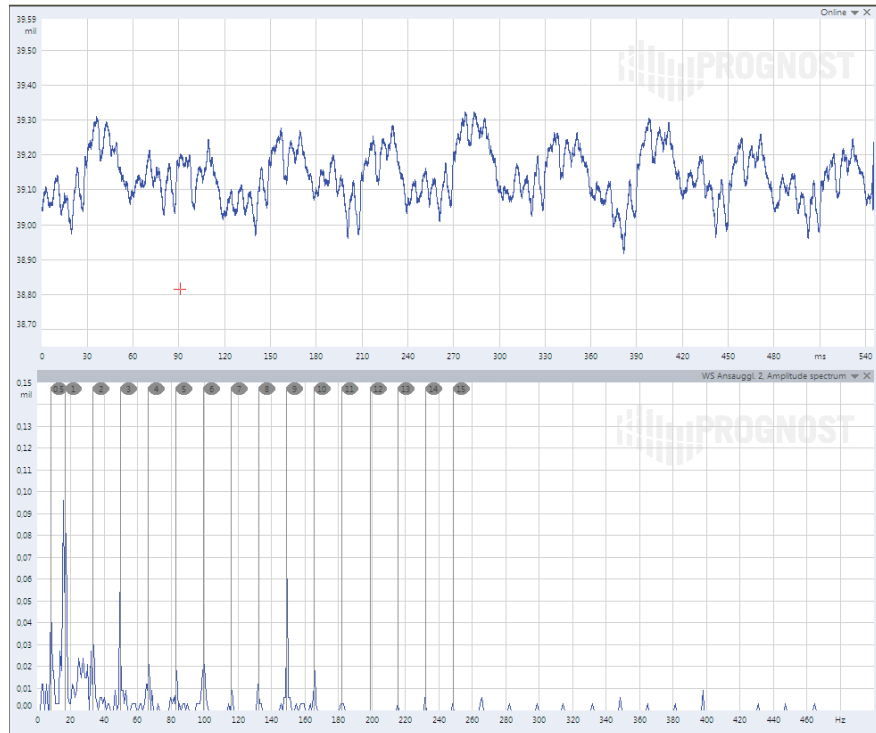
This analysis allows to track the flow rate of each single stage and process online or follow via trend view..



## Display inside VISU

### ***New functions and enhanced usability for working with FFT analyses.***

The display of the FFT analysis has been improved to offer new and revised possibilities in the field of monitoring bearings and shaft vibrations, along with upgrading usability when working with FFT analyses. Additional analyses for non-synchronous or sub-synchronous areas have also been implemented.



## Ring Buffer

### ***Number of possible ring marker increased from 8 to 32 in each ring buffer.***

The maximum number of available ring markers has been increased to 32. In addition to that, the ring marker provides information about the analysis that triggered the marker or the offline ring buffer data (position, time, type of event, cylinder, measuring point and analysis).

Furthermore, the export of ring buffers to excel (csv) has been optimized.

Time	Ring Marker	Cylinder	Measuring Point	Analysis
08:57:49.6704 (0.9174%)	SILver Shutdown, Safety Shutdown Variation, SILver ...	Cyl 1	CHS 1 - St 1	RMS values via 36 Seg. ..10 degrees
08:57:49.6704 (0.9174%)	SILver Shutdown, SILver Alert, SILver Unsafe			
08:57:52.6816 (3.670%)	SILver Shutdown, Safety Shutdown Variation, SILver ...	Cyl 3	CHS 3 - St 2	RMS values via 36 Seg. ..10 degrees
08:57:52.6816 (3.670%)	SILver Shutdown, SILver Alert, SILver Unsafe			
08:57:55.6928 (6.422%)	SILver Shutdown, Safety Shutdown Variation, SILver ...	Cyl 4	CHS 4 - St 3	RMS values via 36 Seg. ..10 degrees
08:57:55.6928 (6.422%)	SILver Shutdown, SILver Alert, SILver Unsafe			
08:57:59.7040 (9.174%)	SILver Shutdown, Safety Shutdown Variation, SILver ...	Cyl 1	CHS 1 - St 1	RMS values via 36 Seg. ..10 degrees
08:57:59.7040 (9.174%)	SILver Shutdown, SILver Alert, SILver Unsafe			
08:58:02.7152 (11.93%)	SILver Shutdown, Safety Shutdown Variation, SILver ...	Cyl 4	CHS 3 - St 2	RMS values via 36 Seg. ..10 degrees
08:58:02.7152 (11.93%)	SILver Shutdown, SILver Alert, SILver Unsafe			
08:58:06.7280 (14.68%)	SILver Shutdown, Safety Shutdown Variation, SILver ...	Cyl 3	CHS 3 - St 2	RMS values via 36 Seg. ..10 degrees
08:58:06.7280 (14.68%)	SILver Shutdown, SILver Alert, SILver Unsafe			
08:58:09.7392 (17.43%)	SILver Shutdown, Safety Shutdown Variation, SILver ...	Cyl 1	CHS 1 - St 1	RMS values via 36 Seg. ..10 degrees
08:58:09.7392 (17.43%)	SILver Shutdown, SILver Alert, SILver Unsafe			

## System

### "Communication unit"

#### *Downsizing the system for improved performance.*

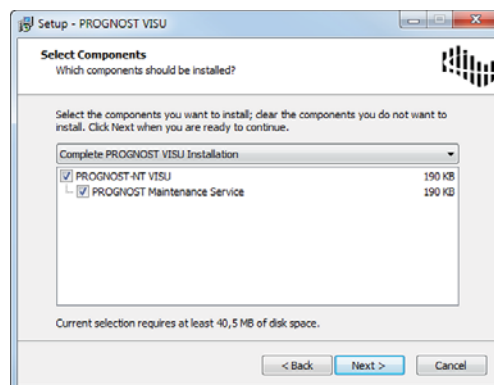
To ensure the performance and efficiency of our systems, the database server has been removed. The functionality of the database server is now covered by the new communication unit, that increases the general performance capacities and enhances reliable communication with PROGNOST®-NT.




### Implementation of upgrades


**Maintenance Service to allow software upgrades in a convenient way.** New safety regulations and complicated approval procedures within the IT structure of our customers required an all-new upgrade procedure for PROGNOST®-NT VISU. This new feature has been integrated in the installation routine; the administrator now simply needs to enable the *PROGNOST Maintenance Service*.


This service authorizes users to install software patches on their own.




PROGNOST Systems GmbH  
Daimlerstr. 10  
48432 Rheine  
Germany


 +49 (0)59 71 - 8 08 19.0

 +49 (0)59 71 - 8 08 19.42

 [info@prognost.com](mailto:info@prognost.com)

PROGNOST Systems, Inc.  
1020 Bay Area Blvd. Suite 105  
Houston, TX, 77058  
USA

 +1 - 281 - 480 - 9300

 +1 - 281 - 480 - 9302

 [infousa@prognost.com](mailto:infousa@prognost.com)

[www.prognost.com](http://www.prognost.com)