

PROGNOST[®]-NT V20
Enhancements to Version 19

Why upgrade your software?

It is essential that the monitoring technology of your machinery is always up-to-date. The upgrade of your PROGNOST®-NT software delivers all the advantages of our ongoing product developments.

In this brochure, the new orbit view with new analysis and new damage patterns are only two topics beside many others. For example we integrated 14 new functions in different context menus which will help you carry out your monitoring tasks faster and more efficiently.

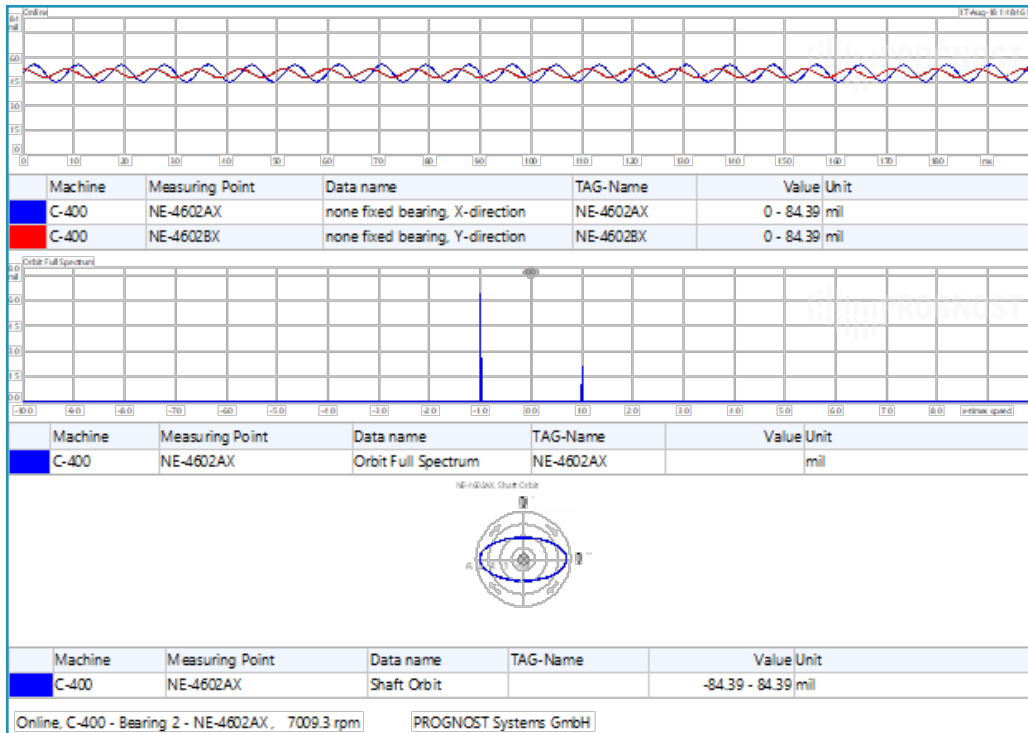
PROGNOST®-NT Version 20

Monitoring and online diagnostics of Rotating Equipment

Rotating Equipment forms the majority of production assets. Pumps, compressors and gearboxes are irreplaceable in the oil, gas and petrochemical industry.

Debottlenecking activities which bring redundant machinery online or simple machine aging are the reasons why permanent monitoring is more relevant than ever before to ensure machinery uptime and reliable production quota.

PROGNOST Systems arms operators around the world with technologies and services they really need to meet their targets. The latest upgrade of the market leading PROGNOST®-NT system comes with more than 180 analyses and views for centrifugal equipment diagnostics.



Orbit Full Spectrum view

Orbit Full Spectrum view

This new analysis offers a toolset for the diagnosis of different types of malfunctions such as imbalance, rotor crack, partial rub/ full annular rub, fluid induced instabilities etc. Sometime it is hard to differentiate between two or more malfunctions, but the Full Spectrum helps to find the root cause.

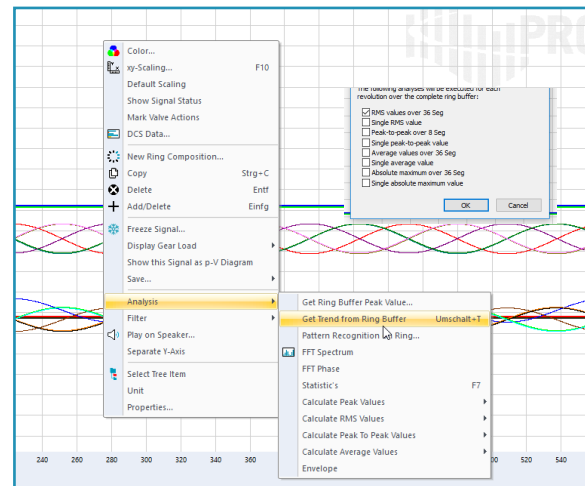
Process Data listings

With Version 20, users are able to decide which process data shall be displayed.

- Option 1: Decide which process data is displayed. Choose between "All process data", only "Incoming" or "Outgoing process data".
- Option 2: Process data listings especially for monitoring system data. This list shows all relevant process values, for example "Temperature of the processor" of a specific monitoring system computer.

Trend from a Ring Buffer

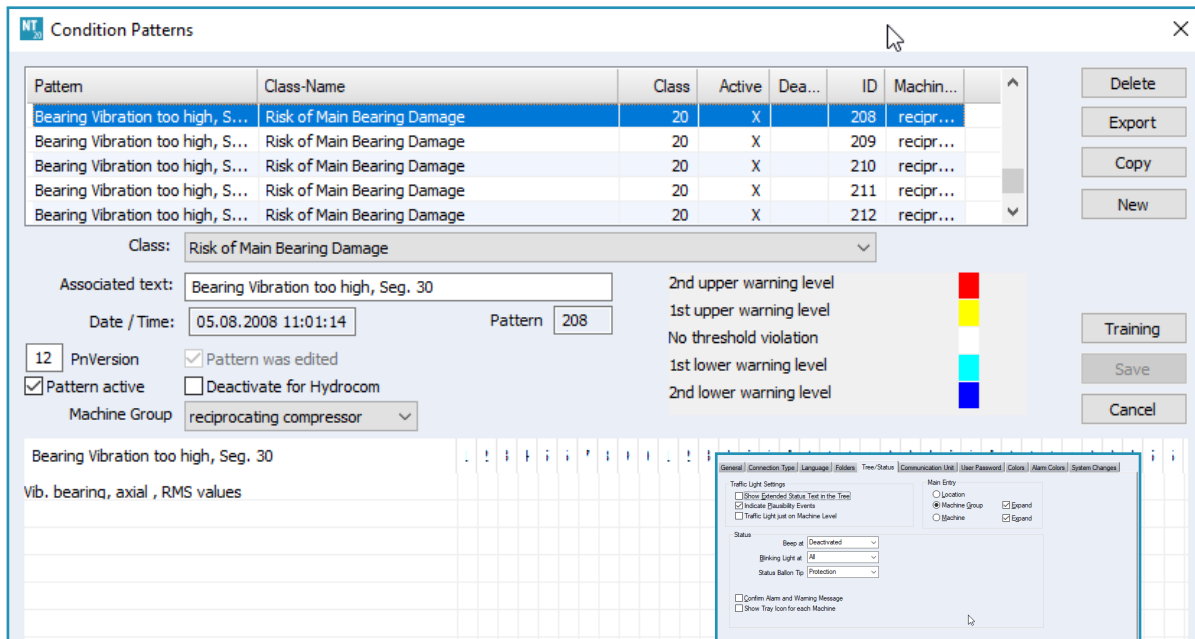
Ring Buffer trend is now available by analyzing a period that could include up the complete ring buffer. After executing the command an analysis type need to be defined. This offers another valuable tool for the ring buffer analysis to get the best results out of 10 minutes of uncompressed data.



Trend from a Ring Buffer

TAG-Bezeichnung	Maschine	Zylinder	Messpunkt	Datum	Uhrzeit	Wert	Einheit	Trend	In/Out	Bezeichnung	Typ	Sortier...
6211 TIA 037	42605C	Cyl. 1	Ventilinst-Temperatur Z...	31.08.2018	12:37:43	110,0	Deg C	0 - 200,0 Deg C	In	Ventilinst-Temperatur Z...	Tempera...	1
6211 TIA 036	42605C	Cyl. 1	Ventilinst-Temperatur Z...	31.08.2018	12:37:43	110,0	Deg C	0 - 200,0 Deg C	In	Ventilinst-Temperatur Z...	Tempera...	1
6211 TIA 038	42605C	Cyl. 1	Ventilinst-Temperatur Z...	31.08.2018	12:37:43	110,0	Deg C	0 - 200,0 Deg C	In	Ventilinst-Temperatur Z...	Tempera...	2
Lube Cyl 3	42605C	Cyl. 5	Lube Transmitter Cylind...	31.08.2018	12:37:43	7644		0 - 16384	In	Lube Transmitter Cylind...	Lube Tra...	3
Lube Pack 3	42605C	Cyl. 3	Lube Transmitter Pack 3	31.08.2018	12:37:43	7651		0 - 16384	In	Lube Transmitter Pack 3	Lube Tra...	4
V. lift reg. C3 CE	42605C	Cyl. 5	Valve lift regulation Cyl...	31.08.2018	12:37:43	closed/o		0 - 2,000 close...	In	Valve lift regulation Cyl...	Valve lift...	5
V. lift reg. C3 CE	42605C	Cyl. 3	Valve lift regulation Cyl...	31.08.2018	12:37:43	closed/o		0 - 2,000 close...	In	Valve lift regulation Cyl...	Valve lift...	6
V. lift reg. C3 HE	42605C	Cyl. 3	Valve lift regulation Cyl...	31.08.2018	12:37:43	closed/o		0 - 2,000 close...	In	Valve lift regulation Cyl...	Valve lift...	7
Lube Cyl 4	42605C	Cyl. 4	Lube Transmitter Cylind...	31.08.2018	12:37:43	7725		0 - 16384	In	Lube Transmitter Cylind...	Lube Tra...	8
Lube Cyl 4	42605C	Cyl. 6	Lube Transmitter Cylind...	31.08.2018	12:37:43	7585		0 - 16384	In	Lube Transmitter Cylind...	Lube Tra...	9
Lube Pack 4	42605C	Cyl. 4	Lube Transmitter Pack 4	31.08.2018	12:37:43	7765		0 - 16384	In	Lube Transmitter Pack 4	Lube Tra...	10
Lube Pack 1	42605C	Cyl. 1	Lube Transmitter Pack 1	31.08.2018	12:37:43	7623		0 - 16384	In	Lube Transmitter Pack 1	Lube Tra...	11
6211 TIA 071	42605C	Cyl. 2	Ventilinst-Temperatur Z...	31.08.2018	12:37:43	110,0	Deg C	0 - 200,0 Deg C	In	Ventilinst-Temperatur Z...	Tempera...	11
Lube Cyl 1	42605C	Cyl. 1	Lube Transmitter Cylind...	31.08.2018	12:37:43	7752		0 - 16384	In	Lube Transmitter Cylind...	Lube Tra...	12

Process Data listings



New analyses and damage patterns for rolling and sleeve bearings

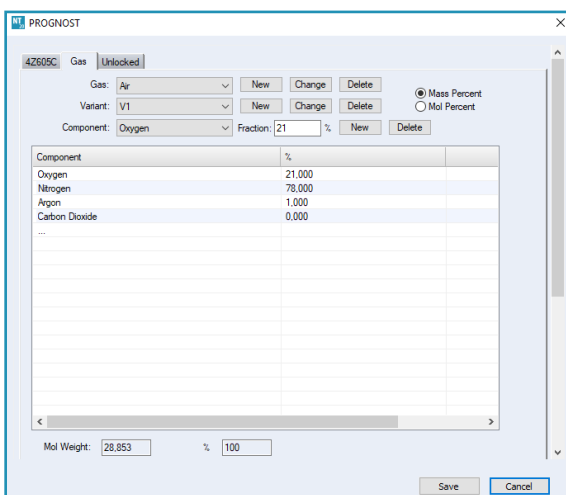
Alarm notification options

New analyses and damage patterns for rolling and sleeve bearings

These new damage patterns enable PROGNOST®-NT to assign the common failure modes of bearings automatically. The output is a clear text message that describes the failure mode, e.g. "Imbalance", "Misalignment" or "Looseness".

Update of gas database

The gas database got a general update which obtains more compatibility to newer software versions of PROGNOST®-NT. This development was required to calculate gas values directly in the PROGNOST®-NT VISU.



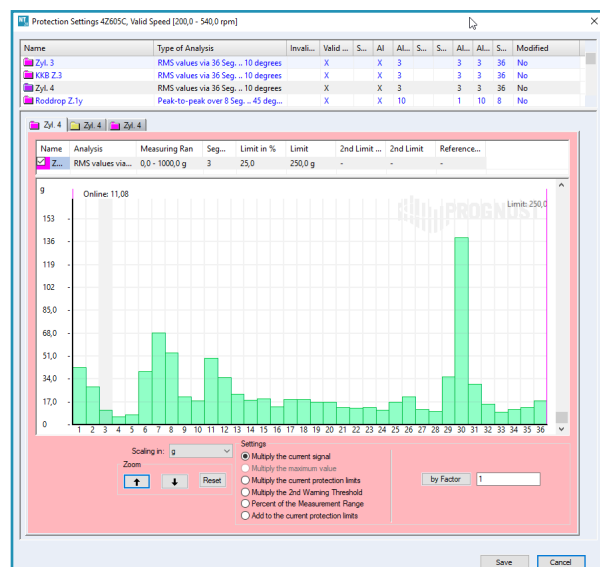
Update of gas database

Alarm notification options

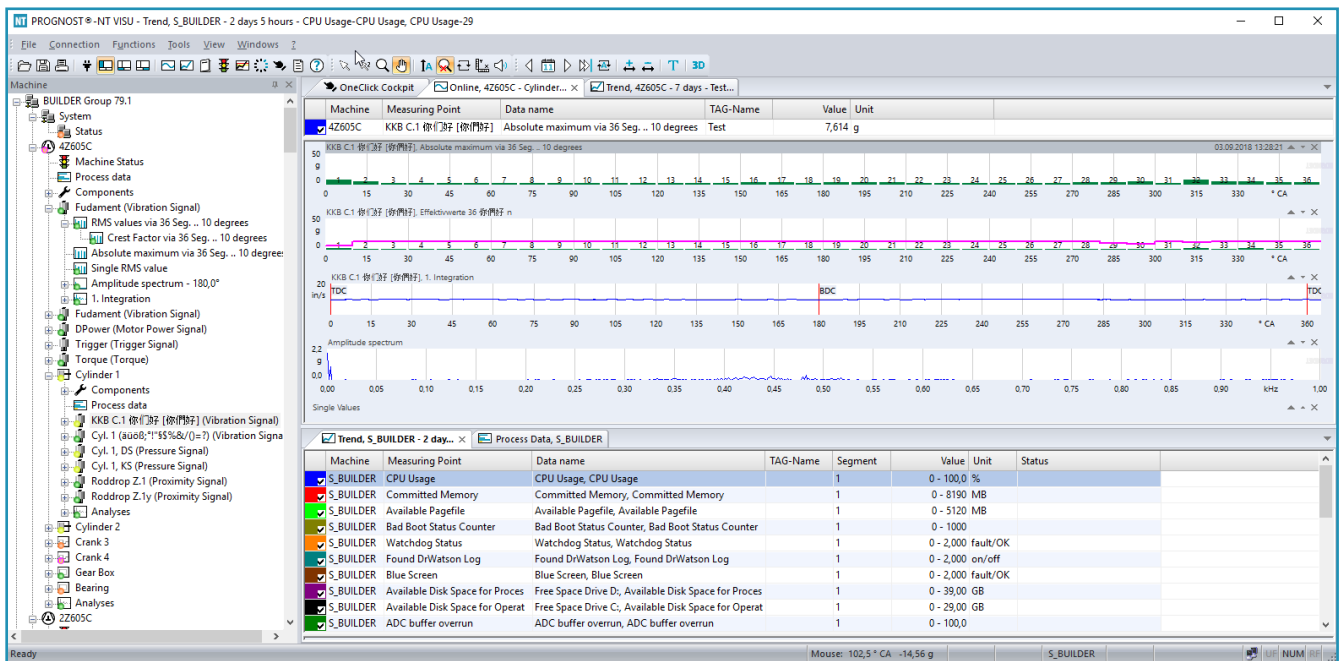
To trigger immediate attention of the user, an additional status function is implemented. It offers, beside the visual blinking status light, also a visual balloon tip and new audio signal in case of important events such as Alert or a Shutdown.

Reference value to support protection limit settings

To provide more assistance during the configuration of warning thresholds and protection limits, the reference value is added in Version 20. This equips the user with the maximum of data to adjust his settings accordingly to his machine.



Added reference value to support protection limit settings



New functions to ease navigation

In Version 20, users enjoy a major improvement for using context menus and individual functions. To list only a few of the added functions:

- System process data directly from the machine tree**
 Provides system process data of the related monitoring computer without knowledge about the system environment.
- Open system trend overview directly from the machine tree**
 Trend view of the system data of the related monitoring computer without knowledge about the system environment.
- Analyses Online available for a grouping**
 When several analyses are clustered in a group, all analysis can be opened by clicking "Analysis online" in the context menu of the group. This offers a quick overview of correspondent analyses for a whole group.
- Analyses Trend available for machine tree entries**
 Trend views for every machine tree entry. This shows the trend overview for the active element or cluster.
- Analyses 3-D trend for sensors in the machine tree**
 Quick analysis results for single sensors out of the 3-D view.
- Additional Y-axis**
 Analyze signals of different units in the same window; a separate Y-axis can be shown by the context menu. This will help to compare different signals with different units in one view.
- Online signal analysis statistics**
 Shows statistical values for the online signal in a separate window.
- Online signal analysis envelope**
 Shows the absolute maximum for the active signal.
- Options for working with online signal views**
 Navigate quickly between Trend and Online views. The "Open online"-function was expanded with additional options:
 - Open Online** - opens the segmented online-view of the trend for the current point in time.
 - Open Online Signal** - opens the online signal of the trend-view for the current point in time.
 - Open Online at cursor position** - open the segmented online-view of the trend for the point in time where the cursor was positioned in the trend.
 - Open Online signal at cursor position** - open the online signal of the trend for the point in time where the cursor was positioned in the trend.
- Select Tree Item**
 Allows quick navigation from elements in trend or online view directly to the corresponding machine tree entry.

Imprint

Picture Credits:

PROGNOST Systems GmbH


Copyright:


PROGNOST Systems GmbH
Daimlerstr. 10, 48432 Rheine, Germany
1st Edition September 2018

© PROGNOST 2018

All rights reserved, in particular the right of reproduction, distribution, and translation. The entire brochure or parts of the brochure may not be reproduced or distributed in any form without the written permission of the PROGNOST Systems GmbH. No liability is accepted for the topicality, correctness, or completeness of the content.


PROGNOST Systems GmbH
Daimlerstraße 10
48432 Rheine
Germany


 +49 (0)59 71 - 8 08 19.0

 +49 (0)59 71 - 8 08 19.42

 info@prognost.com

PROGNOST Systems, Inc.
1018 Hercules Ave.
Houston, TX, 77058
USA

 +1 - 281 - 480 - 9300

 +1 - 281 - 480 - 9302

 infousa@prognost.com

www.prognost.com